



San Francisco District  
1455 Market Street  
San Francisco, CA 94103

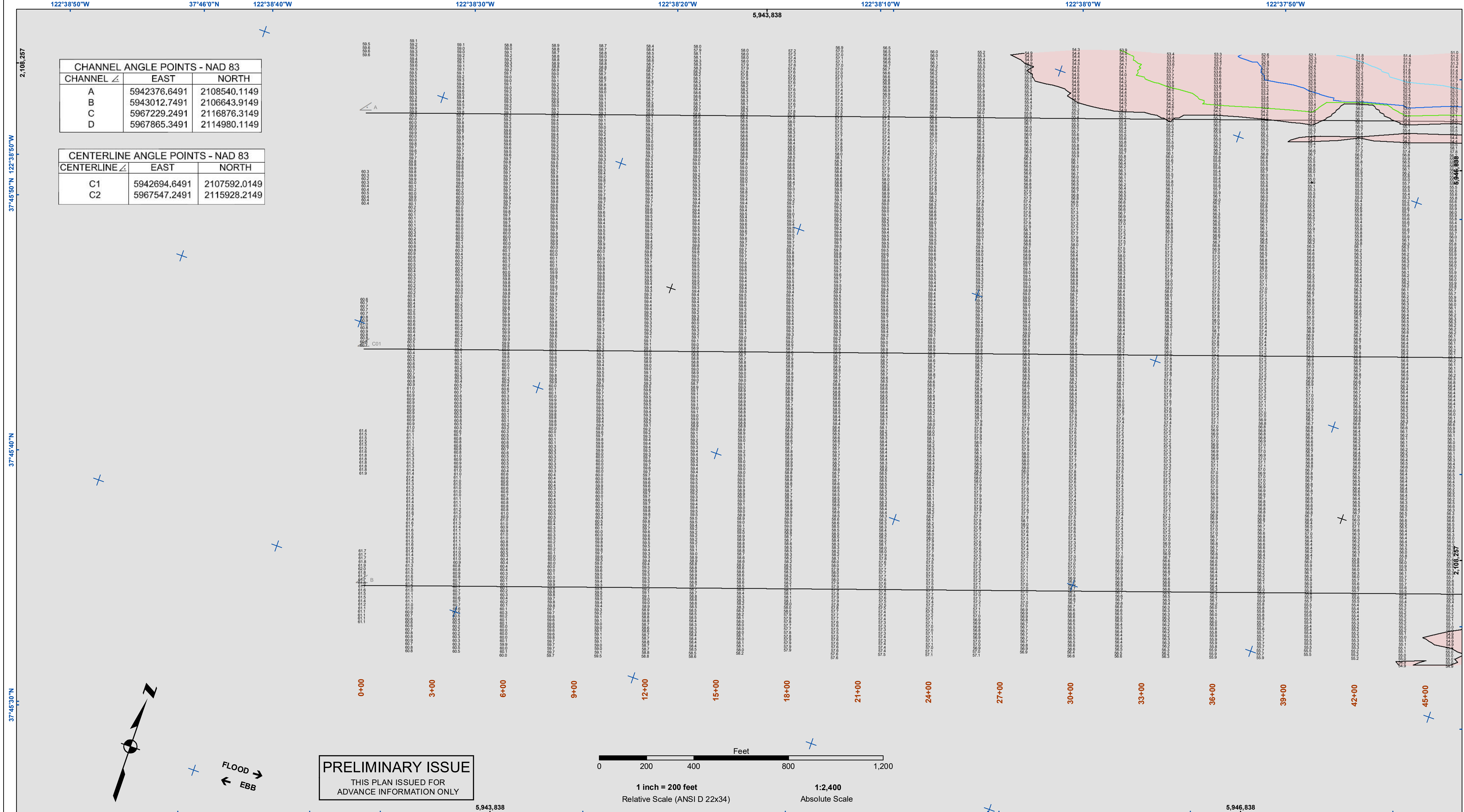
**DISCLAIMER**  
The United States Government furnishes this information as a public service. It is not intended to be used for any purpose other than that for which it was prepared. The user assumes all liability for any use of this information. The user is responsible for the accuracy of any data derived from this information. The user is responsible for the accuracy of any data derived from this information. The user is responsible for the accuracy of any data derived from this information.

Chart Date: Sep 30, 2021  
Designed by: PTD  
Plotted by: PTD  
Checked by: PTD  
Drawn by: PTD

PREPARED UNDER THE DIRECTION OF  
LT COLONEL C.E. DISTRICT ENGINEER  
Submitted: Hydro Survey Team Leader  
Recommended: Chief, Hydro Survey Section  
Approved: Chief, Construction Branch

SAN FRANCISCO BAY  
SAN FRANCISCO  
MAINSHIP CHANNEL  
SF\_01\_SFM\_20210922\_AD  
22 September 2021  
4.2-202004.20

Sheet  
Reference  
Number  
1 of 5



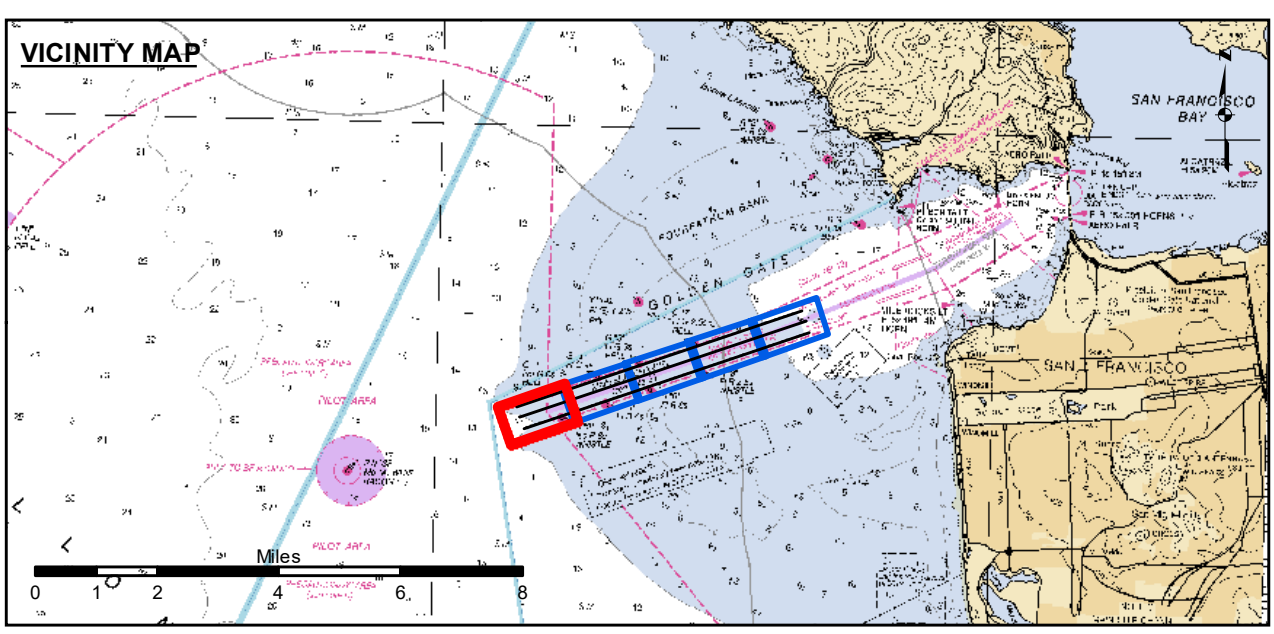
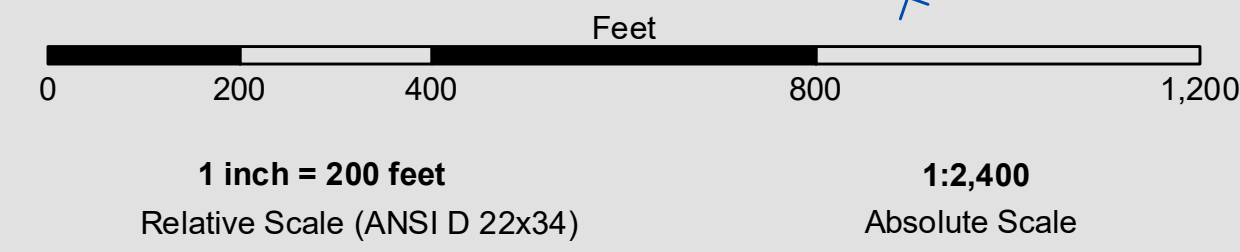
**CHANNEL ANGLE POINTS - NAD 83**

CHANNEL	ANGLE	EAST	NORTH
A	5942376.6491	2108540.1149	
B	5943012.7491	2106643.9149	
C	5967229.2491	2116876.3149	
D	5967865.3491	2114980.1149	

**CENTERLINE ANGLE POINTS - NAD 83**

CENTERLINE	ANGLE	EAST	NORTH
C1	5942694.6491	2107592.0149	
C2	5967547.2491	2115928.2149	

**PRELIMINARY ISSUE**  
THIS PLAN ISSUED FOR  
ADVANCE INFORMATION ONLY



- Federal Navigation Channel
- Shoaling Area
- Placement Area
- Anchorage Area
- Wreck Area
- Submerged Wreck
- Angle Point
- Beacon, General
- Obstruction Point
- Navigation Buoy
- Navigation Buoy
- Shoalest Sounding\*
- Contour Lines: 51, 52, 53, 54, 55

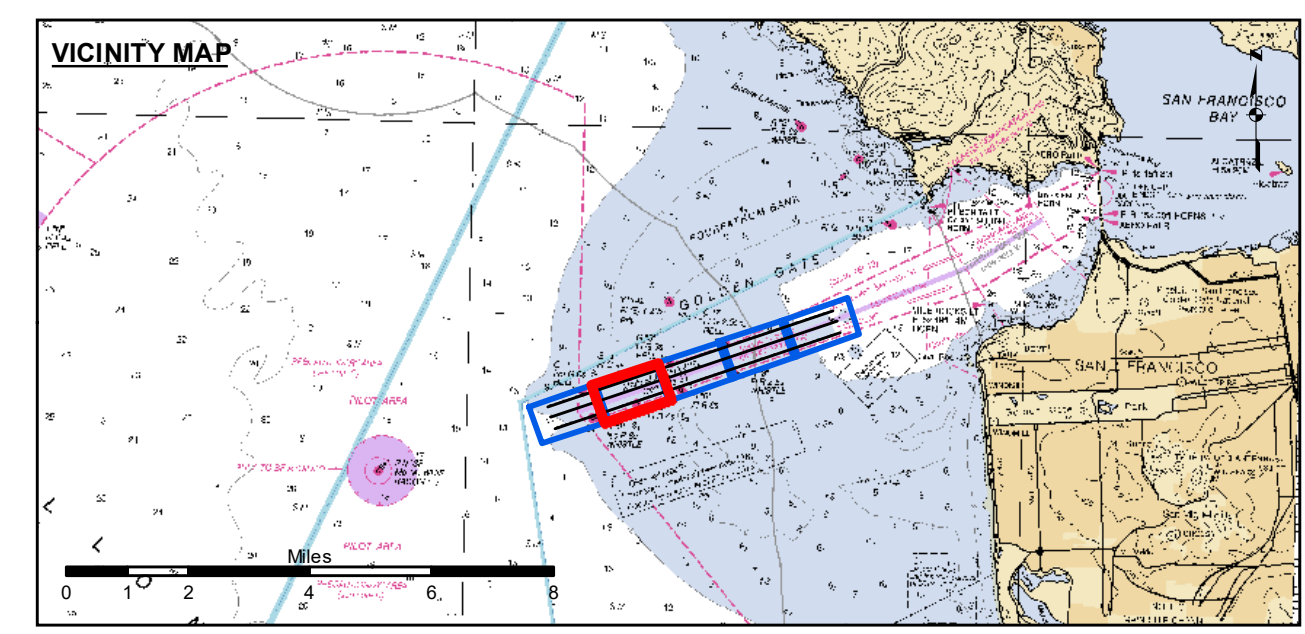
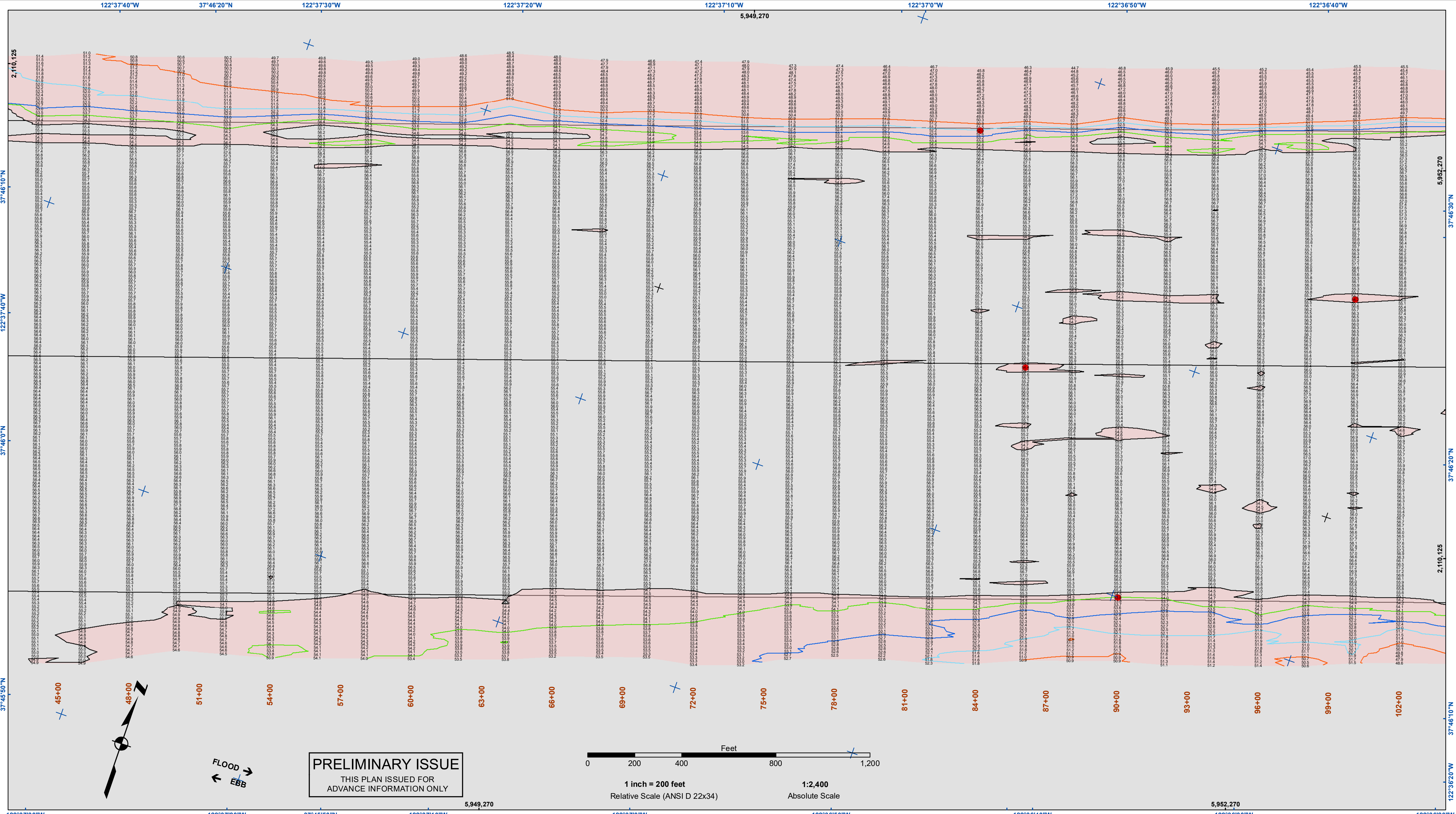
**NOTES:**  
HORIZONTAL COORDINATE SYSTEM:  
NORTH AMERICAN DATUM OF 1983 (NAD83), PROJECTED TO THE STATE PLANE COORDINATE SYSTEM (SPCS), CALIFORNIA ZONE III. DISTANCE UNITS IN U.S. SURVEY FEET.  
VERTICAL DATUM:  
SOUNDINGS ARE SHOWN IN FEET AND INDICATE DEPTHS BELOW MEAN LOWER LOW WATER.  
THE INFORMATION DEPICTED ON THIS MAP REPRESENTS THE RESULTS OF A SURVEY CONDUCTED ON THE DATE INDICATED AND CAN ONLY BE CONSIDERED TO REPRESENT THE GENERAL CONDITION EXISTING AT THAT TIME.  
\*SHOALEST SOUNDING PER QUARTER PER REACH

DRAWING NOT TO BE USED FOR NAVIGATION, ONLY CHANNEL CONDITION AT DATE OF SURVEY.  
THE LOCATION OF ALL NAVIGATION AIDS ARE BASED ON INFORMATION PROVIDED BY THE U.S. COAST GUARD. BUOY LOCATIONS REPRESENT THE POSITION OF THE SINKER ONLY.  
INFORMATION DEPICTED ON THIS MAP REPRESENTS THE RESULTS OF SURVEYS MADE ON THE DATES INDICATED AND CAN ONLY BE CONSIDERED AS INDICATING THE GENERAL CONDITIONS AT THAT TIME.  
SOUNDINGS WERE TAKEN BY FATHOMETER AND ARE SHOWN TO THE NEAREST TENTH OF A FOOT. SOUNDINGS ARE BASED ON THE DATUM OF MEAN LOWER LOW WATER AT THE LOCALITY, NAVD 88.  
PLANE GRID, BEARING AND COORDINATES ARE BASED ON THE STATE OF CALIFORNIA COORDINATE SYSTEM, LAMBERT CONFORMAL PROJECTION, ZONE III NAD 83, CALIFORNIA, AS DESCRIBED IN SPECIAL PUBLICATION NO. 235, PUBLISHED BY NATIONAL OCEAN SURVEY.  
THE PROJECT DEPTH IS 55 FEET AT M.L.L.W. SOUNDINGS ARE BASED ON THE TIDE GAUGE LOCATED AT THE HYDE STREET PIER, SAN FRANCISCO, CALIFORNIA.  
VERTICAL CONTROL:  
BENCHMARK "Q-481" USCGS DISK ELEV. 19.54 FT MLLW.  
HORIZONTAL CONTROL:  
COAST GUARD D-BEACON.





US Army Corps of Engineers  
San Francisco District  
1455 Market Street  
San Francisco, CA 94103



- Federal Navigation Channel
  - Shoaling Area
  - Placement Area
  - Anchorage Area
  - Wreck Area
  - Submerged Wreck
  - Angle Point
  - Beacon, General
  - Obstruction Point
  - Navigation Buoy
  - Navigation Buoy
  - Shoalest Sounding\*
- Contour Lines**
- 51
  - 52
  - 53
  - 54
  - 55

NOTES:  
HORIZONTAL COORDINATE SYSTEM:  
NORTH AMERICAN DATUM OF 1983 (NAD83), PROJECTED TO THE STATE PLANE COORDINATE SYSTEM (SPCS), CALIFORNIA ZONE III. DISTANCE UNITS IN U.S. SURVEY FEET.  
VERTICAL DATUM:  
SOUNDINGS ARE SHOWN IN FEET AND INDICATE DEPTHS BELOW MEAN LOWER LOW WATER.  
THE INFORMATION DEPICTED ON THIS MAP REPRESENTS THE RESULTS OF A SURVEY CONDUCTED ON THE DATE INDICATED AND CAN ONLY BE CONSIDERED TO REPRESENT THE GENERAL CONDITION EXISTING AT THAT TIME.  
\*SHOALEST SOUNDING PER QUARTER PER REACH

DRAWING NOT TO BE USED FOR NAVIGATION, ONLY CHANNEL CONDITION AT DATE OF SURVEY.  
THE LOCATION OF ALL NAVIGATION AIDS ARE BASED ON INFORMATION PROVIDED BY THE U.S. COAST GUARD. BUOY LOCATIONS REPRESENT THE POSITION OF THE SINKER ONLY.  
INFORMATION DEPICTED ON THIS MAP REPRESENTS THE RESULTS OF SURVEYS MADE ON THE DATES INDICATED AND CAN ONLY BE CONSIDERED AS INDICATING THE GENERAL CONDITIONS AT THAT TIME.  
SOUNDINGS WERE TAKEN BY FATHOMETER AND ARE SHOWN TO THE NEAREST TENTH OF A FOOT. SOUNDINGS ARE BASED ON THE DATUM OF MEAN LOWER LOW WATER AT THE LOCALITY, NAVD 88.  
PLANE GRID, BEARING AND COORDINATES ARE BASED ON THE STATE OF CALIFORNIA COORDINATE SYSTEM, LAMBERT CONFORMAL PROJECTION, ZONE III NAD 83, CALIFORNIA, AS DESCRIBED IN SPECIAL PUBLICATION NO. 235, PUBLISHED BY NATIONAL OCEAN SURVEY.  
THE PROJECT DEPTH IS 55 FEET AT M.L.L.W. SOUNDINGS ARE BASED ON THE TIDE GAUGE LOCATED AT THE HYDE STREET PIER, SAN FRANCISCO, CALIFORNIA.  
VERTICAL CONTROL:  
BENCHMARK "Q-481" USCGS DISK ELEV. 19.54 FT MLLW.  
HORIZONTAL CONTROL:  
COAST GUARD D-BEACON.

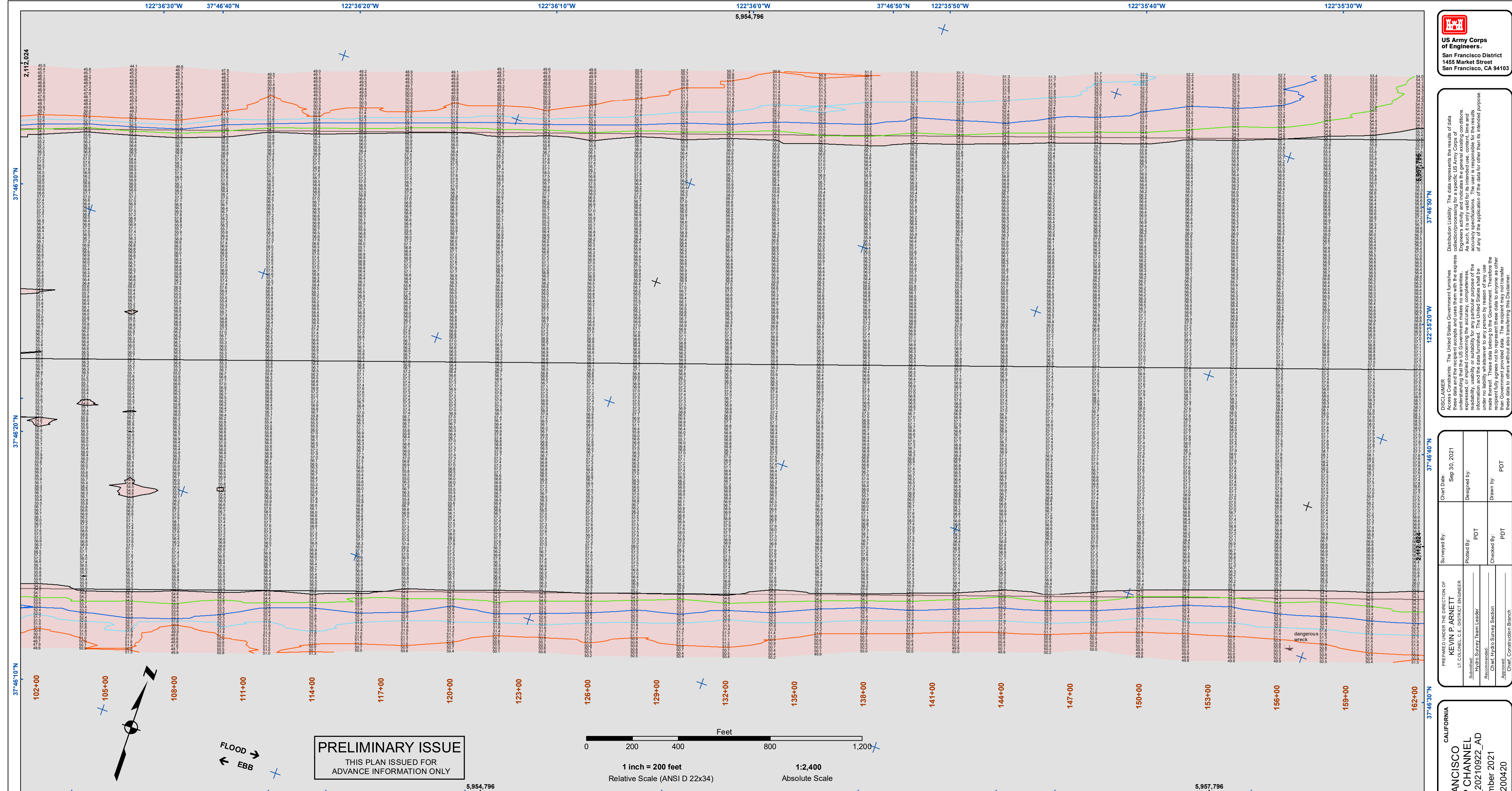
**DISCLAIMER**  
The United States Government furnishes this information as a service to the public. It is not intended to be used for any purpose other than that for which it was prepared. The user assumes all liability for any use of this information. The user is responsible for the accuracy of the data for other than its intended purpose.  
Distribution Liability: The data represents the results of data collection and processing. Engineers activity and indicates the general existing conditions. As such, it is only valid for its intended use, content, time and accuracy applications. The user is responsible for the results of any of the application of the data for other than its intended purpose.

Prepared Under the Direction of	Surveyed By	Chart Date
LT COLONEL C.E. DISTRICT ENGINEER	KEVIN P. ARNETT	Sep 30, 2021
Submitted:	Plotted By	Designed by:
Hydro Survey Team Leader	PDT	PDT
Recommended:	Checked By:	Drawn by:
Chief, Hydro Survey Section	PDT	PDT
Approved:	Chief, Construction Branch	

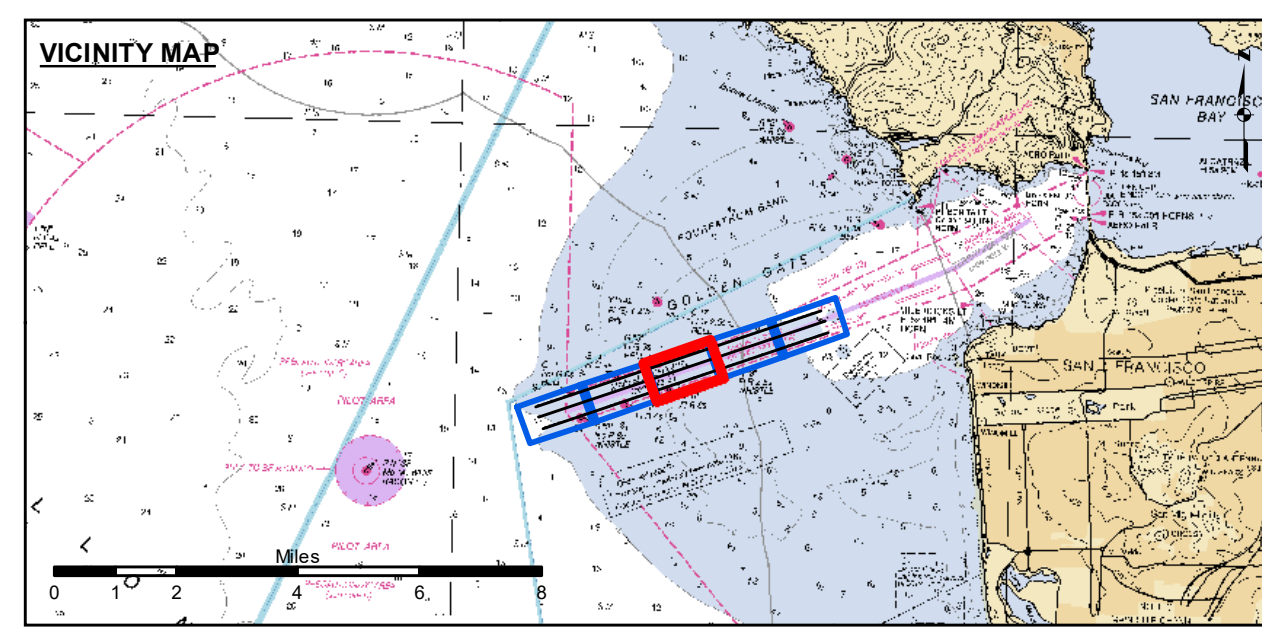
SAN FRANCISCO BAY  
CALIFORNIA  
SAN FRANCISCO DISTRICT  
MAINSHIP CHANNEL  
SF\_01\_SFM\_20210922\_AD  
22 September 2021  
4.2-202004.20

Sheet Reference Number  
2 of 5





PRELIMINARY ISSUE  
THIS PLAN ISSUED FOR  
ADVANCE INFORMATION ONLY



- Federal Navigation Channel
- Shoaling Area
- Placement Area
- Anchorage Area
- Wreck Area
- Submerged Wreck
- Angle Point
- Beacon, General
- Obstruction Point
- Navigation Buoy
- Navigation Buoy
- Shoalest Sounding\*
- Contour Lines
  - 51
  - 52
  - 53
  - 54
  - 55

NOTES:  
HORIZONTAL COORDINATE SYSTEM:  
NORTH AMERICAN DATUM OF 1983 (NAD83), PROJECTED TO THE STATE PLANE COORDINATE SYSTEM (SPCS), CALIFORNIA ZONE III. DISTANCE UNITS IN U.S. FEET.

VERTICAL DATUM:  
SOUNDINGS ARE SHOWN IN FEET AND INDICATE DEPTHS BELOW MEAN LOWER LOW WATER.

THE INFORMATION DEPICTED ON THIS MAP REPRESENTS THE RESULTS OF A SURVEY CONDUCTED ON THE DATE INDICATED AND CAN ONLY BE CONSIDERED TO REPRESENT THE GENERAL CONDITION EXISTING AT THAT TIME.

\*SHOALEST SOUNDING PER QUARTER PER REACH

DRAWING NOT TO BE USED FOR NAVIGATION, ONLY CHANNEL CONDITION AT DATE OF SURVEY.  
THE LOCATION OF ALL NAVIGATION AIDS ARE BASED ON INFORMATION PROVIDED BY THE U.S. COAST GUARD. BUOY LOCATIONS REPRESENT THE POSITION OF THE SINKER ONLY.

INFORMATION DEPICTED ON THIS MAP REPRESENTS THE RESULTS OF SURVEYS MADE ON THE DATES INDICATED AND CAN ONLY BE CONSIDERED AS INDICATING THE GENERAL CONDITIONS AT THAT TIME.

SOUNDINGS WERE TAKEN BY FATHOMETER AND ARE SHOWN TO THE NEAREST TENTH OF A FOOT. SOUNDINGS ARE BASED ON THE DATUM OF MEAN LOWER LOW WATER AT THE LOCALITY, NAVD 88.

PLANE GRID, BEARING AND COORDINATES ARE BASED ON THE STATE OF CALIFORNIA COORDINATE SYSTEM, LAMBERT CONFORMAL PROJECTION, ZONE III NAD 83, CALIFORNIA, AS DESCRIBED IN SPECIAL PUBLICATION NO. 235, PUBLISHED BY NATIONAL OCEAN SURVEY.

THE PROJECT DEPTH IS 55 FEET AT M.L.L.W. SOUNDINGS ARE BASED ON THE TIDE GAUGE LOCATED AT THE HYDE STREET PIER, SAN FRANCISCO, CALIFORNIA.

VERTICAL CONTROL:  
BENCHMARK "Q-481" USCGS DISK ELEV. 19.54 FT MLLW.

HORIZONTAL CONTROL:  
COAST GUARD D-BEACON.

**DISCLAIMER** The United States Government furnishes this information as a service to the public. It is not intended to be used for any purpose other than that for which it was prepared. The United States Government makes no warranty, expressed or implied, concerning the accuracy, completeness, or reliability of the information. The user is responsible for the results of any application of the information for any purpose other than that for which it was prepared. These data belong to the Government. Therefore, the recipient must not disseminate these data to others without also transferring this disclaimer.

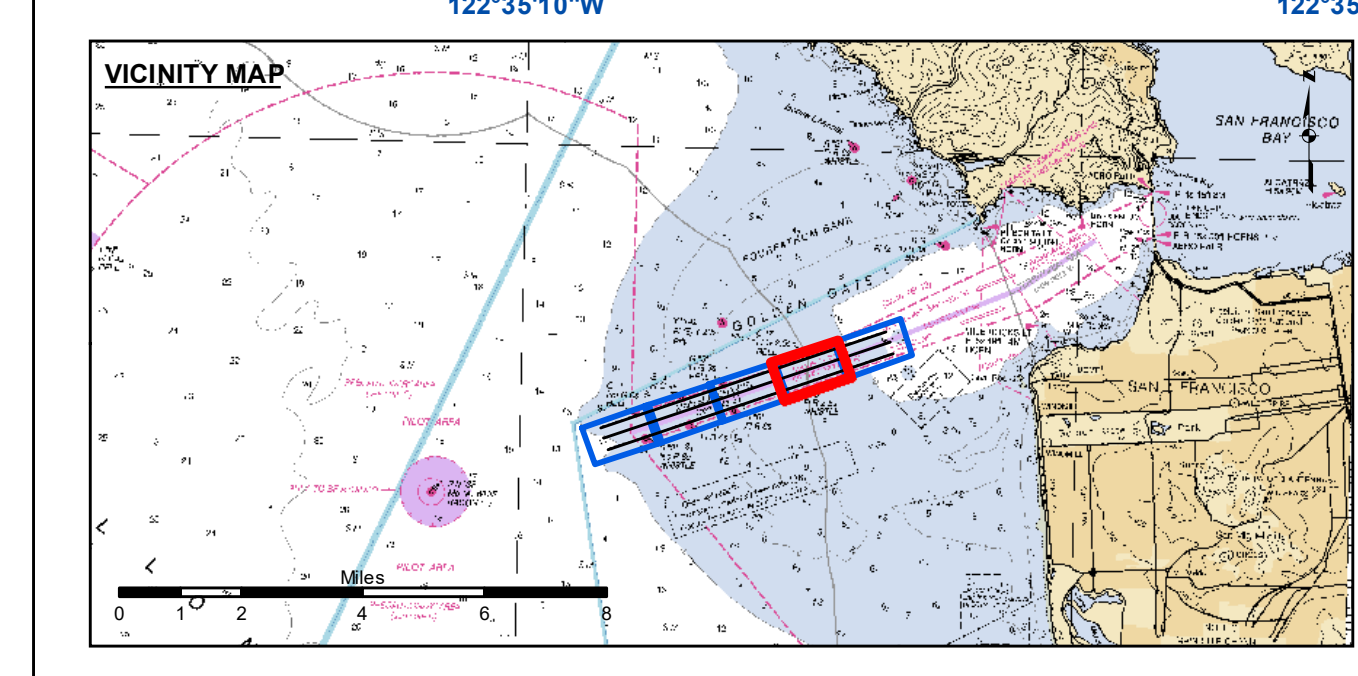
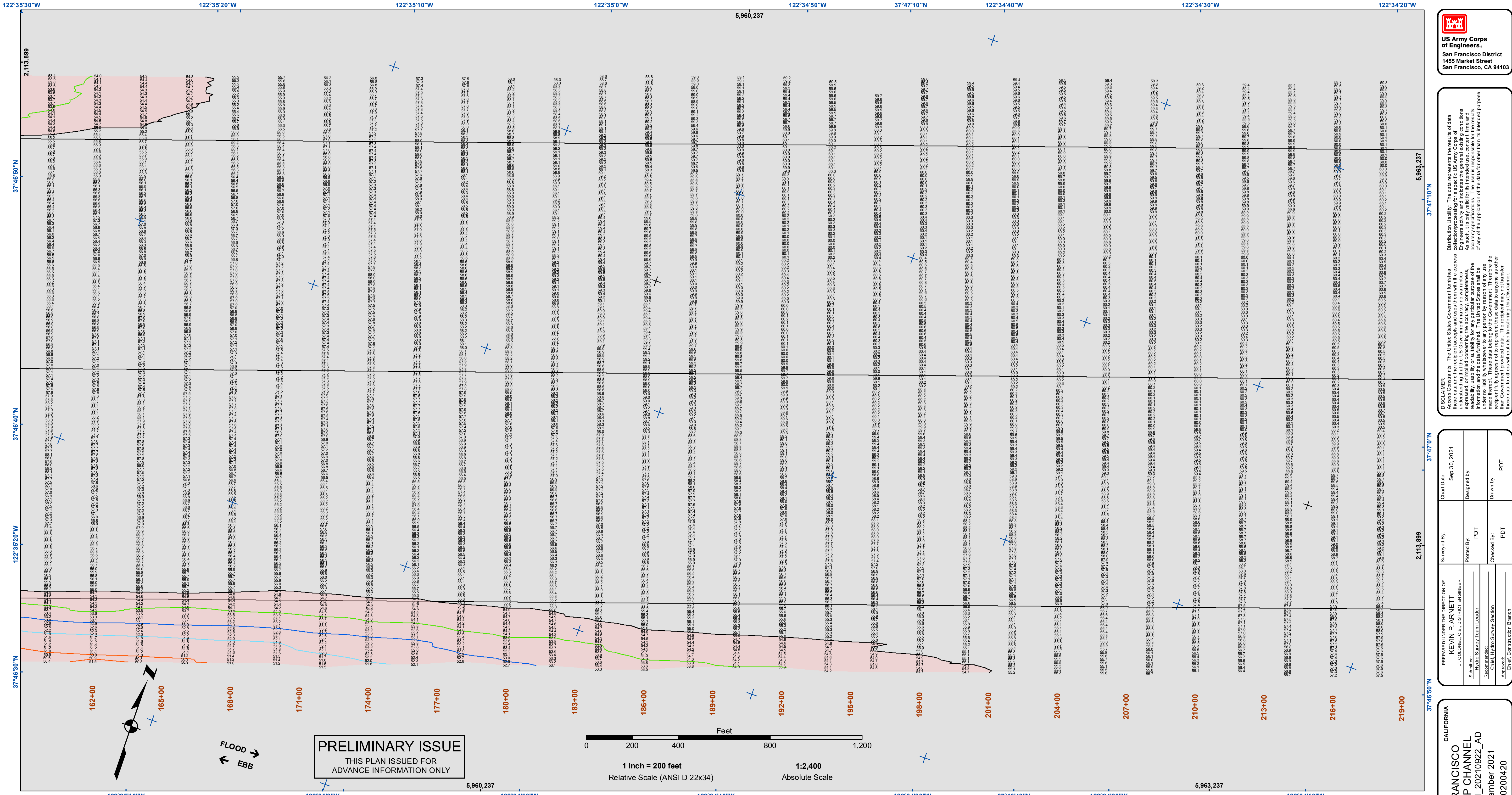
Chart Date:	Sep 30, 2021
Designed by:	PDT
Plotted by:	PDT
Checked by:	PDT
Drawn by:	PDT

PREPARED UNDER THE DIRECTION OF  
 LT COLONEL C.E. DISTRICT ENGINEER  
 Kevin P. Arnett  
 Hydro Survey Team Leader  
 Chief, Hydro Survey Section  
 Chief, Construction Branch

SAN FRANCISCO BAY  
 SAN FRANCISCO  
 MAINSHIP CHANNEL  
 SF\_01\_SFM\_20210922\_AD  
 22 September 2021  
 4.2-202004.20

Sheet  
 Reference  
 Number  
 3 of 5





	Federal Navigation Channel		Beacon, General		Contour Lines	51
	Shoaling Area		Obstruction Point		52	
	Placement Area		Navigation Buoy		53	
	Anchorage Area		Navigation Buoy		54	
	Wreck Area		Shoalest Sounding*		55	
	Submerged Wreck					
	Angle Point					

NOTES:  
HORIZONTAL COORDINATE SYSTEM:  
NORTH AMERICAN DATUM OF 1983 (NAD83), PROJECTED TO THE STATE PLANE COORDINATE SYSTEM (SPCS), CALIFORNIA ZONE III. DISTANCE UNITS IN U.S. SURVEY FEET.

VERTICAL DATUM:  
SOUNDINGS ARE SHOWN IN FEET AND INDICATE DEPTHS BELOW MEAN LOWER LOW WATER.

THE INFORMATION DEPICTED ON THIS MAP REPRESENTS THE RESULTS OF A SURVEY CONDUCTED ON THE DATE INDICATED AND CAN ONLY BE CONSIDERED TO REPRESENT THE GENERAL CONDITION EXISTING AT THAT TIME.

\*SHOALEST SOUNDING PER QUARTER PER REACH

DRAWING NOT TO BE USED FOR NAVIGATION, ONLY CHANNEL CONDITION AT DATE OF SURVEY. THE LOCATION OF ALL NAVIGATION AIDS ARE BASED ON INFORMATION PROVIDED BY THE U.S. COAST GUARD. BUOY LOCATIONS REPRESENT THE POSITION OF THE SINKER ONLY.

INFORMATION DEPICTED ON THIS MAP REPRESENTS THE RESULTS OF SURVEYS MADE ON THE DATES INDICATED AND CAN ONLY BE CONSIDERED AS INDICATING THE GENERAL CONDITIONS AT THAT TIME.

SOUNDINGS WERE TAKEN BY FATHOMETER AND ARE SHOWN TO THE NEAREST TENTH OF A FOOT. SOUNDINGS ARE BASED ON THE DATUM OF MEAN LOWER LOW WATER AT THE LOCALITY, NAVD 88.

PLANE GRID, BEARING AND COORDINATES ARE BASED ON THE STATE OF CALIFORNIA COORDINATE SYSTEM, LAMBERT CONFORMAL PROJECTION, ZONE III NAD 83, CALIFORNIA, AS DESCRIBED IN SPECIAL PUBLICATION NO. 235, PUBLISHED BY NATIONAL OCEAN SURVEY.

THE PROJECT DEPTH IS 55 FEET AT M.L.L.W. SOUNDINGS ARE BASED ON THE TIDE GAUGE LOCATED AT THE HYDE STREET PIER, SAN FRANCISCO, CALIFORNIA.

VERTICAL CONTROL:  
BENCHMARK "Q-481" USCG&S DISK ELEV. 19.54 FT MLLW.

HORIZONTAL CONTROL:  
COAST GUARD D-BEACON.

**US Army Corps of Engineers**  
San Francisco District  
1455 Market Street  
San Francisco, CA 94103

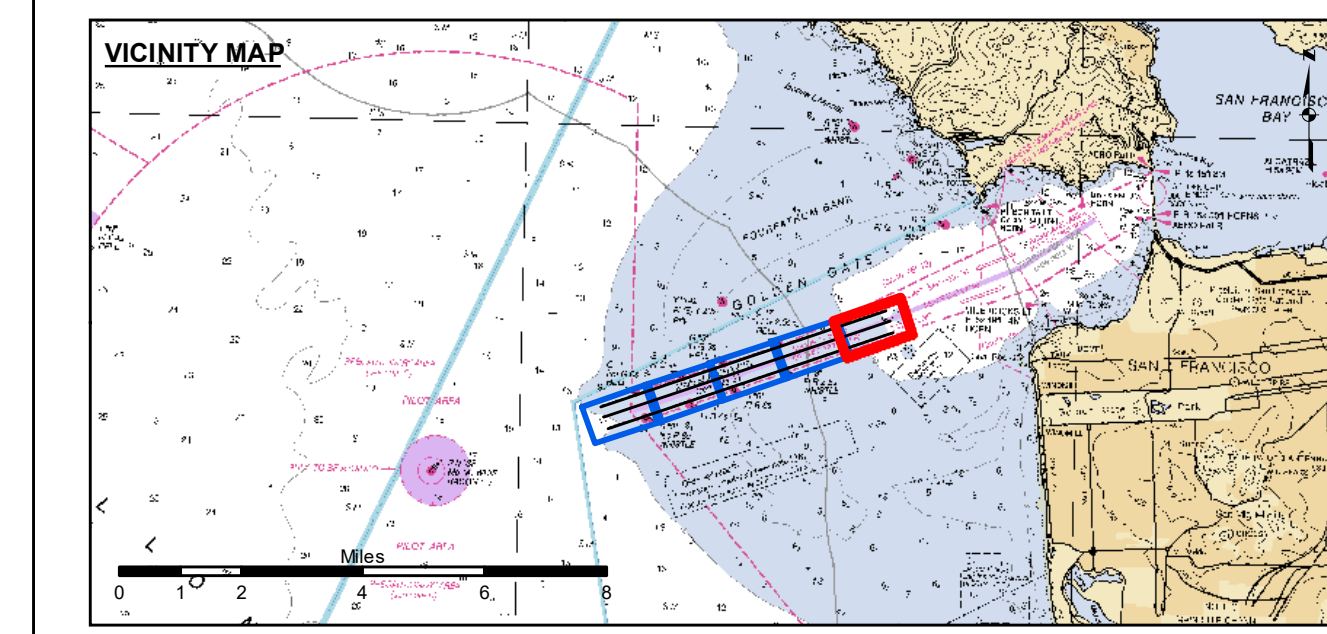
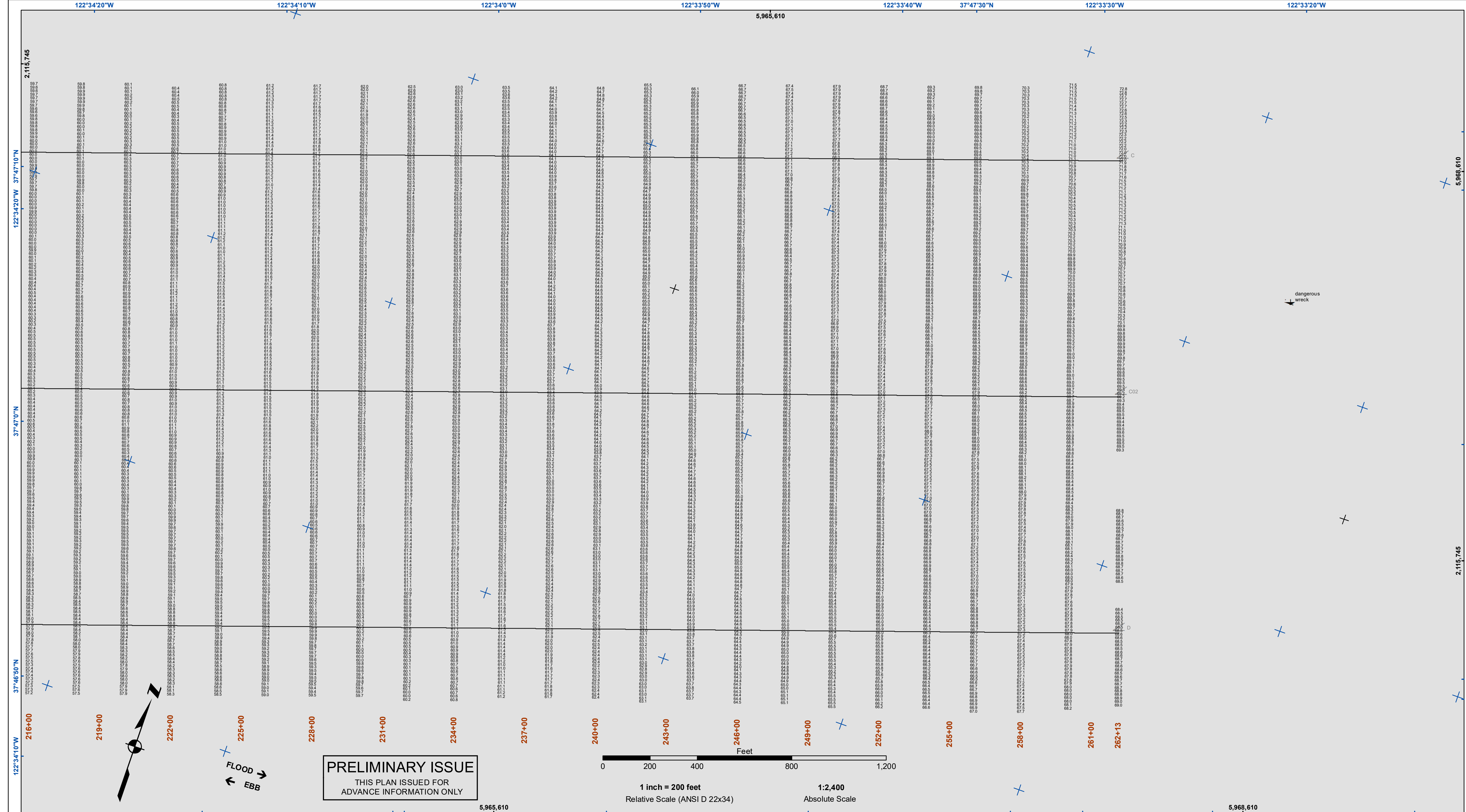
**DISCLAIMER**  
The United States Government furnishes this information as a service to the public. It is not intended to be used for navigation. The user is responsible for the accuracy of the data for other than its intended purpose. The user is responsible for the accuracy of the data for other than its intended purpose. The user is responsible for the accuracy of the data for other than its intended purpose.

Prepared Under the Direction of:	Kevin P. Arnett	Chart Date:	Sept 30, 2021
Submitted:	Hydro Survey Team Leader	Designed by:	PDT
Recommended:	Chief, Hydro Survey Section	Checked by:	PDT
Approved:	Chief, Construction Branch	Drawn by:	PDT

SAN FRANCISCO BAY  
SAN FRANCISCO  
CALIFORNIA  
MAINSHIP CHANNEL  
SF\_01\_SFM\_20210922\_AD  
22 September 2021  
4.2-202004.20

**Sheet Reference Number**  
4 of 5





- Federal Navigation Channel
- Shoaling Area
- Placement Area
- Anchorage Area
- Wreck Area
- Submerged Wreck
- Angle Point
- Beacon, General
- Obstruction Point
- Navigation Buoy
- Navigation Buoy
- Shoalest Sounding\*
- Contour Lines 51
- Contour Lines 52
- Contour Lines 53
- Contour Lines 54
- Contour Lines 55

NOTES:  
 HORIZONTAL COORDINATE SYSTEM:  
 NORTH AMERICAN DATUM OF 1983 (NAD83), PROJECTED TO THE STATE PLANE COORDINATE SYSTEM (SPCS), CALIFORNIA ZONE III. DISTANCE UNITS IN U.S. SURVEY FEET.  
 VERTICAL DATUM:  
 SOUNDINGS ARE SHOWN IN FEET AND INDICATE DEPTHS BELOW MEAN LOWER LOW WATER.  
 THE INFORMATION DEPICTED ON THIS MAP REPRESENTS THE RESULTS OF A SURVEY CONDUCTED ON THE DATE INDICATED AND CAN ONLY BE CONSIDERED TO REPRESENT THE GENERAL CONDITION EXISTING AT THAT TIME.  
 \*SHOALEST SOUNDING PER QUARTER PER REACH

DRAWING NOT TO BE USED FOR NAVIGATION, ONLY CHANNEL CONDITION AT DATE OF SURVEY.  
 THE LOCATION OF ALL NAVIGATION AIDS ARE BASED ON INFORMATION PROVIDED BY THE U.S. COAST GUARD. BUOY LOCATIONS REPRESENT THE POSITION OF THE SINKER ONLY.  
 INFORMATION DEPICTED ON THIS MAP REPRESENTS THE RESULTS OF SURVEYS MADE ON THE DATES INDICATED AND CAN ONLY BE CONSIDERED AS INDICATING THE GENERAL CONDITIONS AT THAT TIME.  
 SURVEYED BY THE CORPS OF ENGINEERS.  
 SOUNDINGS WERE TAKEN BY FATHOMETER AND ARE SHOWN TO THE NEAREST TENTH OF A FOOT. SOUNDINGS ARE BASED ON THE DATUM OF MEAN LOWER LOW WATER AT THE LOCALITY, NAVD 88.  
 PLANE GRID, BEARING AND COORDINATES ARE BASED ON THE STATE OF CALIFORNIA COORDINATE SYSTEM, LAMBERT CONFORMAL PROJECTION, ZONE III NAD 83, CALIFORNIA, AS DESCRIBED IN SPECIAL PUBLICATION NO. 235, PUBLISHED BY NATIONAL OCEAN SURVEY.  
 THE PROJECT DEPTH IS 55 FEET AT M.L.L.W. SOUNDINGS ARE BASED ON THE TIDE GAUGE LOCATED AT THE HYDE STREET PIER, SAN FRANCISCO, CALIFORNIA.  
 VERTICAL CONTROL:  
 BENCHMARK "Q-481" USCGS DISK ELEV. 19.54 FT MLLW.  
 HORIZONTAL CONTROL:  
 COAST GUARD D-BEACON.



**DISCLAIMER**  
 The United States Government furnishes this information as a service to the public. It is not intended to be used for any purpose other than that for which it was prepared. The user assumes all responsibility for the accuracy and completeness of the information. The user is responsible for the results of any application of the information. The user is not to be held liable for any damage or injury resulting from the use of this information. The user is not to be held liable for any damage or injury resulting from the use of this information. The user is not to be held liable for any damage or injury resulting from the use of this information.

Chart Date:	Sep 30, 2021
Designed by:	PDT
Plotted by:	PDT
Checked by:	PDT
Drawn by:	PDT

PREPARED UNDER THE DIRECTION OF  
 KEVIN P. ARNETT  
 LT COLONEL, C.E., DISTRICT ENGINEER  
 Submitted: Hydro Survey Team Leader  
 Recommended: Chief, Hydro Survey Section  
 Approved: Chief, Construction Branch

SAN FRANCISCO BAY  
 SAN FRANCISCO  
 MAINSHIP CHANNEL  
 SF\_01\_SFM\_20210922\_AD  
 22 September 2021  
 4.2-202004.20

Sheet  
 Reference  
 Number  
 5 of 5